

# Zeus Forex Scalping Indicator FREE Download

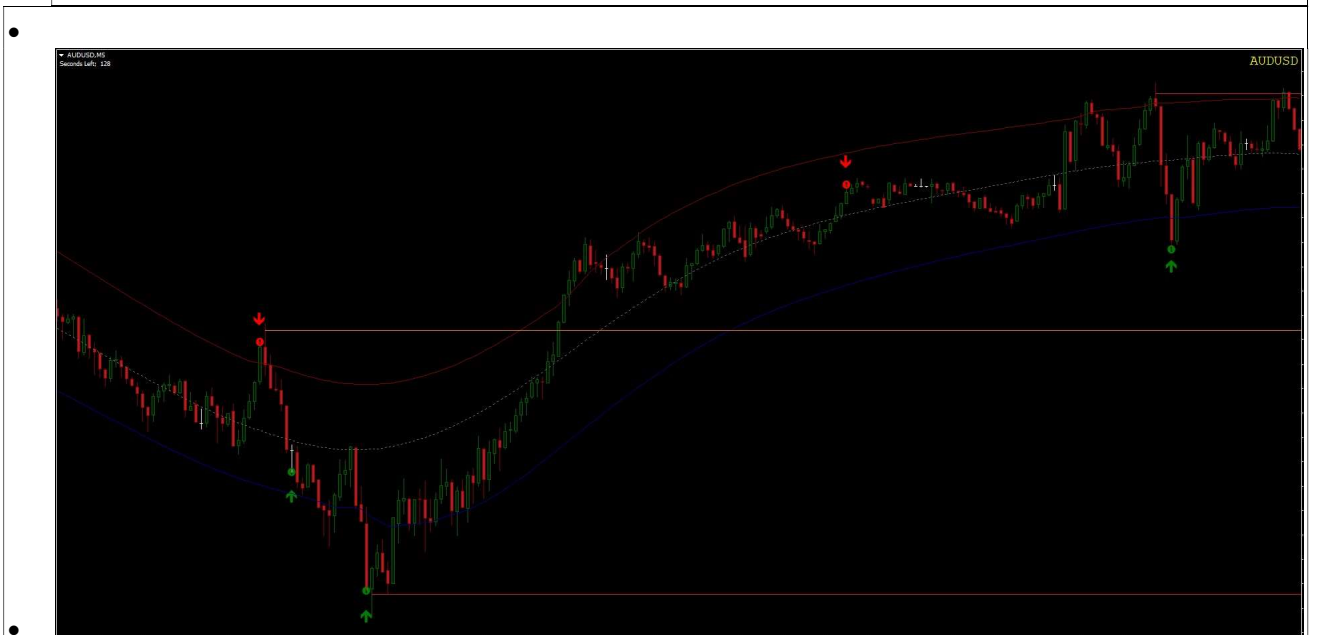
Zeus Forex Scalping Indicator is a NON-Repaint(Arrows) indicator system that gives **easy-to-use buy/sell signals**. This set-up will suit **Scalpers** and **Binary Traders**. It uses trend lines, support and resistance, and other complex strategies.

This system uses TMA bands, those blue and red bands. This is the most important part of this system. It plots both upper and lower channels at the main chart window. Price hits the upper channel means the market is entering the overbought condition. On the other hand, the price at the lower band indicates the oversold condition of the market.

For **Scalping**, it works great on M1 or M5 timeframes. But you can use it on any. If used for **binary options**, **a 1-Minute chart is desirable for 15-minute expiration** or **a 5-Minute chart for 30-minute expiration**.

**Zeus indicator system** can give you trading signals **you can take as they are** or **add your additional chart analysis to filter the signals further, which is recommended**.

While traders of all experience levels can use this system, it can be beneficial to practice trading on an MT4 demo account until you become consistent and confident enough to go live.



Forex Scalping Indicator FREE Download [ForexCracked.com](http://ForexCracked.com)

You can set the Forex Scalping Indicator to send you a signal alert via **Mobile Notification, or platform pop-ups**. This is helpful as it means you do not need to stare at the charts all day waiting for signals to appear, and you can monitor multiple charts all at once.

Zeus Forex Scalping Indicator System can be used on **any Forex currency pair and other assets such as stocks, commodities, cryptos, precious metals, oil, gas, etc.** You can also use it on any time frame that suits you best, from the 1-minutes through to the 1-Hour charts. It works best on M1 or M5 timeframes.

## Forex Scalping Indicator Trading rules

The current price is most likely moving inside of the **red–blue** bands. when the price is getting near the edge of the upper or lower band, that's where you need to keep your eyes peeled for a trade opportunity.

For **Scalping**, it works great on M1 or M5 timeframes. But you can use it on any. We also recommend keeping a look for support & resistance when entering trades.

### Buy signal or Call

- Price broke through the **lower** border of the channel
- There was a **green** arrow pointing up

### Sell signal or Put

- Price broke through the **upper** border of the channel
- There was a **red** arrow pointing down

### If Zeus indicator is used for **Binary Options**

- 1-Minute chart for 15-minute expiration.
- 5-Minute chart for 30-minute expiration.